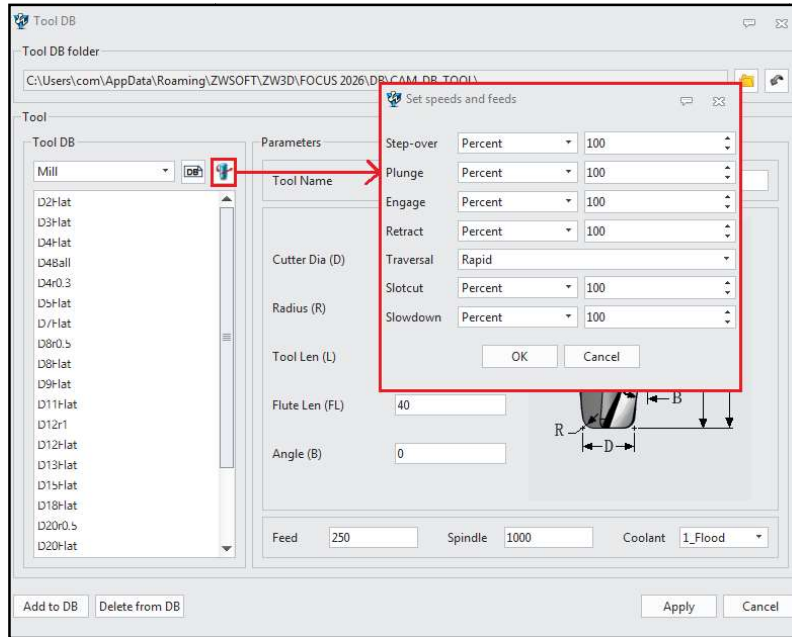


Focus Series 2026 SP2 Release Notes

CAM Focus

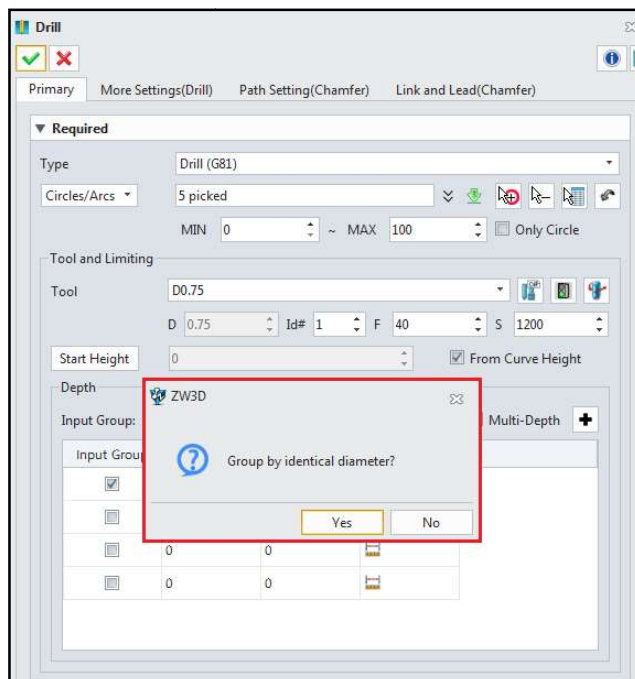
1. **NEW** Tool DB ()

Added the **Set speeds and feeds** option.



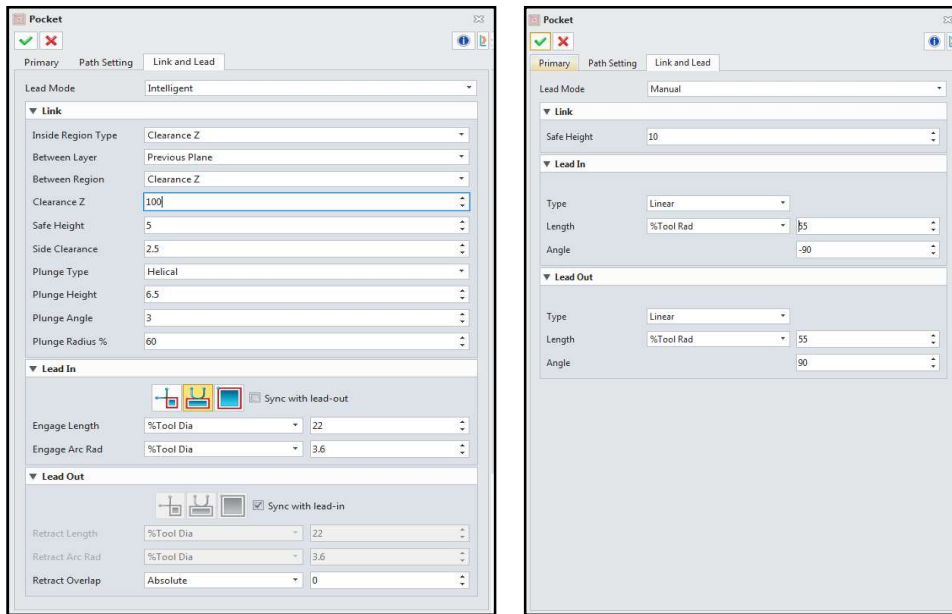
2. **NEW** Drill ()

Added a **grouping message based on the same diameter** when the Multi-Depth option is enabled.



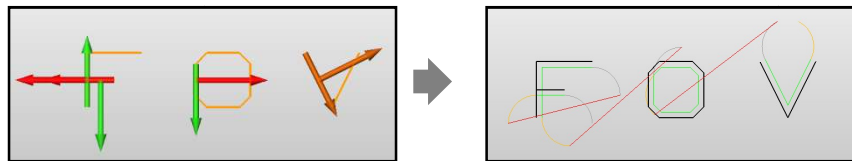
3. NEW Pocket / Pocket Rest / Contour ()

Added options to set the **Lead Mode** (Intelligent/Manual).



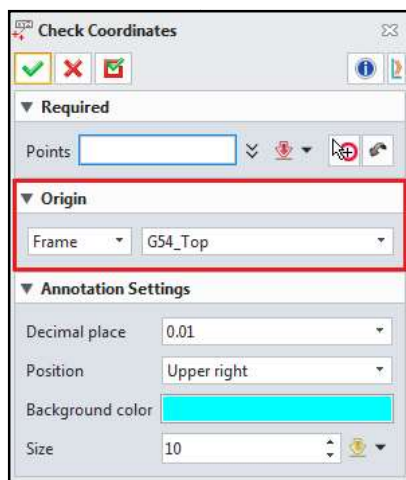
4. NEW Engraving ()

Added support for machining direction preview when Cut Strategy is set to **Pick Order**.



5. NEW Check Coordinates ()

Added the **Frame** option to the Origin reference settings.

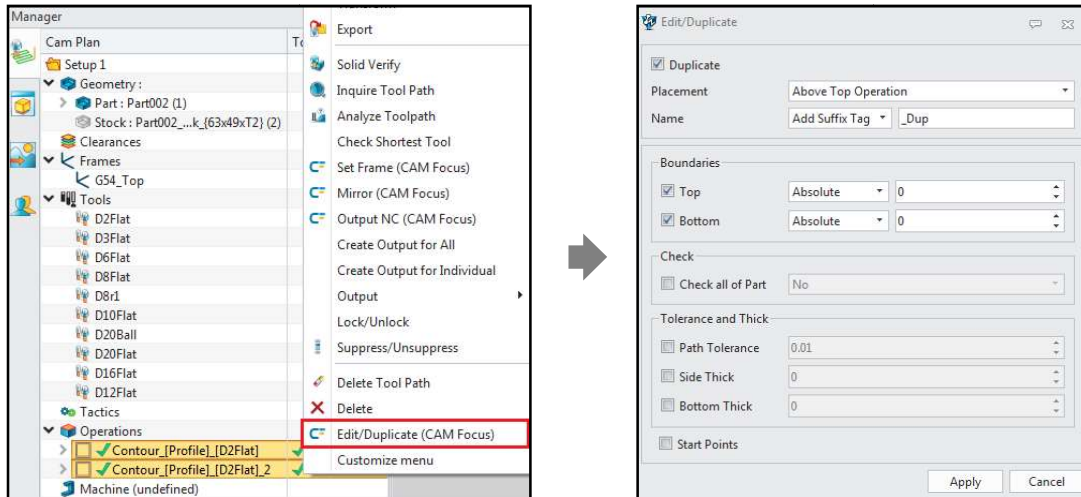


6. **NEW** Edit/Duplicate (CAM Focus) ()

Added Edit/Duplicate to the popup menu.

Supported Operation: **Pocket** (Spiral Cut / Zigzag Cut / Box Cut / Contour Cut), **Contour** (Profile Cut / Ramp Cut).

- When Duplicate is **disabled**: Apply options to the selected operation.
- When Duplicate is **enabled**: Copy the selected operation and then apply options to the duplicated operation.



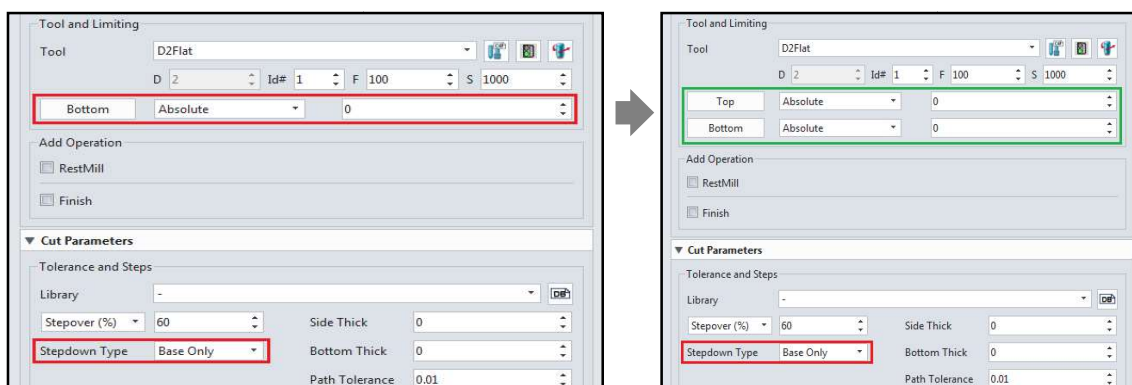
7. Tool DB ()

Modified the constraints for generating corner round tools.

- (Existing) Tool creation is restricted when $\text{Radius (R)} \times 2 > \text{Cutter Dia (D)}$
- (Changed) Tool creation is restricted when **Radius (R) > Cutting Len (Ctl)**

8. Topface Cut / Pocket / Pocket Rest / Contour ()

When Stepdown Type is set to Base Only, the Top field is displayed.



9. Topface Cut ()

When 'Using Stock Block' is enabled, the stock top face is used as the feature based on the frame direction.

10. Contour ()

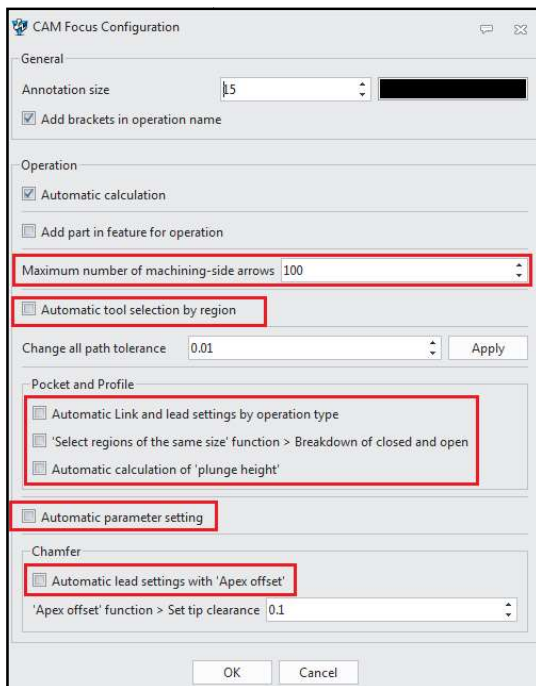
Fixed an issue where preview annotations for Number of Cuts ≥ 2 were displayed in the opposite direction for certain frame directions.

11. Chamfer ()

- (1) Fixed an issue where the annotation position and machining result for **Apex Offset** were reversed when Cut Direction was set to Conventional.
- (2) Fixed an intermittent issue where abnormal toolpaths were generated when a Start Height value was specified during operation creation.

12. CAM Focus Configuration ()

- (1) Changed the default value of 'Maximum number of machining-side arrows' from 25 to **100**.
- (2) Changed the default setting of automatic-related options to **unchecked**.



13. Create Operation (CAM Focus) (C^F)

- (1) Changed the initial option values from the ZW3D operation defaults to the **CAM Focus operation defaults**.
- (2) Fixed an intermittent issue where setting changes were not applied during execution.

14. Edit (CAM Focus) (C^F)

Fixed an issue where Sync with Lead In/Out was incorrectly enabled even when the Lead In/Out settings differed in certain situations.

15. Mirror (CAM Focus) (C^F)

Improved automatic application of mirrored Pre-Drill Points and Start Points to new mirrored operations.

16. Other Improvements

- (1) Network License: Improved stability when the external server is forcibly terminated due to network instability.
- (2) Stock Block (CAM): Fixed a display issue that occurred when executing the function with no entity selected.
- (3) Move/Copy Curve: Fixed an issue where only point entities were created when copying in place.
- (4) Check Curves: Fixed an issue where the Mode and Overlap Check option values were applied using the values from the time the function was activated.
- (5) Layer Manager: Improved loading performance during function execution.