

Focus Series 2025 SP Release Notes

Basic Focus

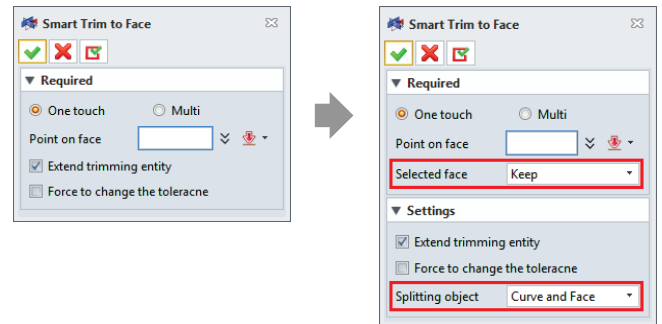
1. Coordinate List ()

- (1) Added **Point** type to **Circle/Arc** type to drag and select points
- (2) Changed the name of the **Point** type to **Point on the entity**



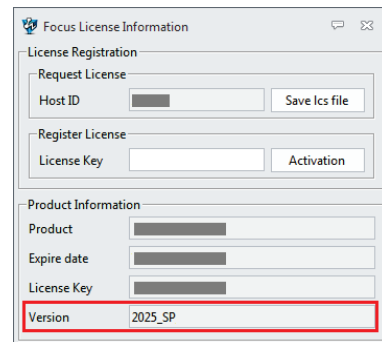
2. Smart Trim to Face ()

- (1) Added option to **Keep** or **Remove** the selected
- (2) Added option to set boundary types



3. Focus License Info. ()

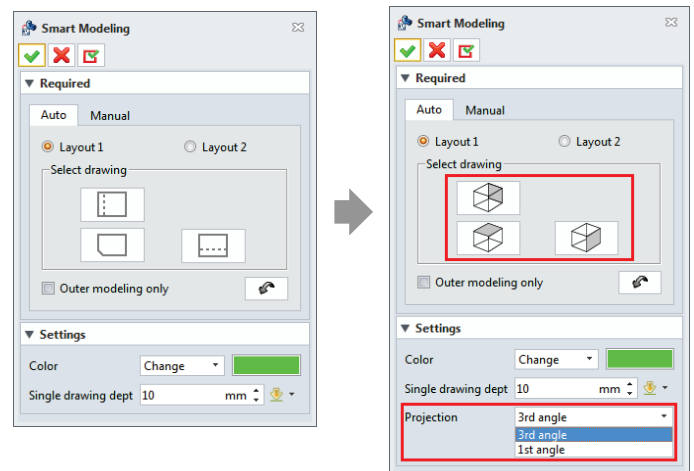
Display the installed version information



Modeling Focus

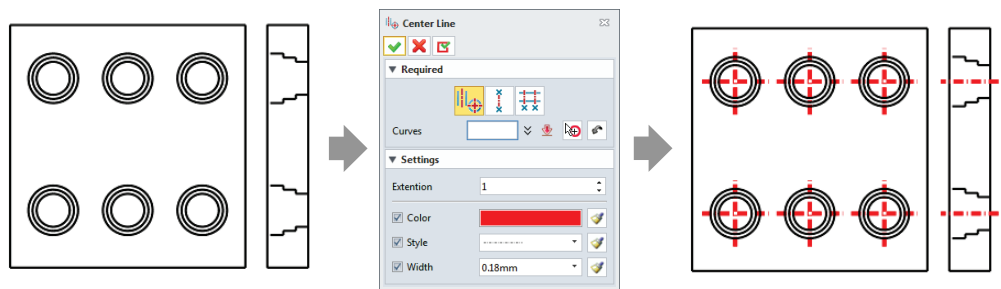
1. Smart Modeling ()

- (1) Changed to an intuitive drawing selection icon
- (2) Added **Projection** options to select 1st angle drawing



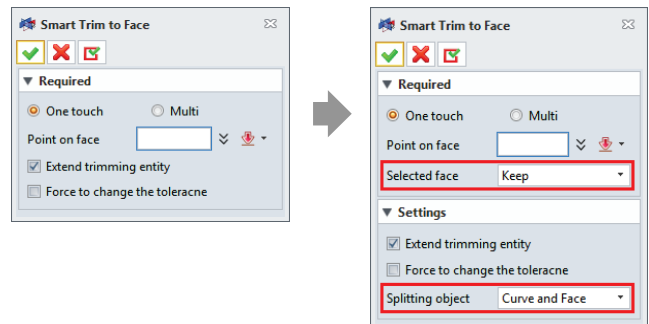
2. NEW Center Line (🔧)

Added function to create a centerline between lines, points or circles



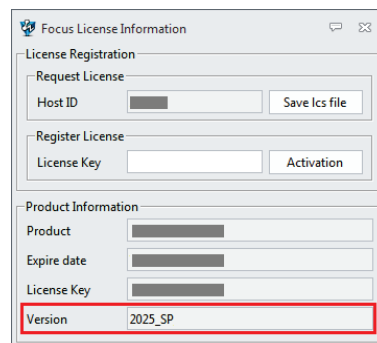
3. Smart Trim to Face (✂️)

- (1) Added option to **Keep** or **Remove** the selected
- (2) Added option to set boundary types



4. Focus License Info. (🔑)

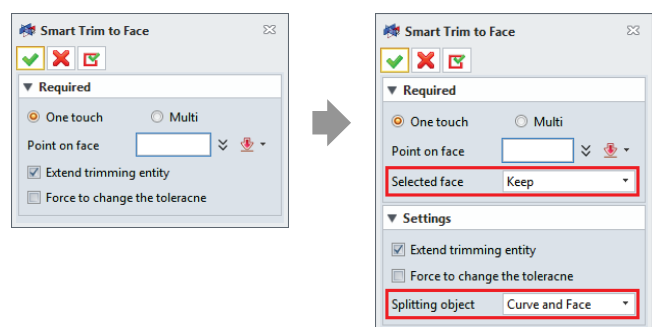
Display the installed version information



Electrode Focus

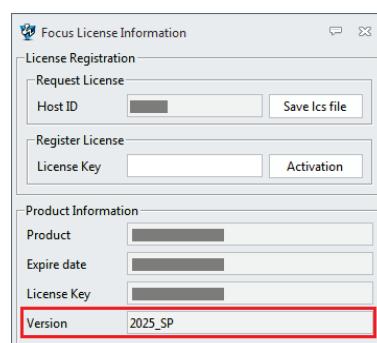
1. Smart Trim to Face (✂️)

Added option to **Keep** or **Remove** the selected part



2. Focus License Info. (🔑)

Display the installed version information



Face-Edit Focus

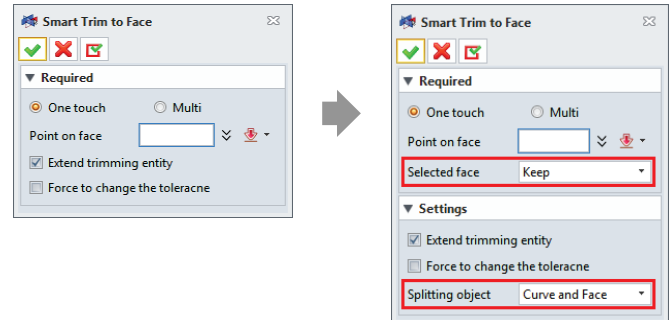
1. Fill Hole (🔍)

Automatically activate **Ignore Sheltered Entities** function when running this function to prevent incorrect face selection



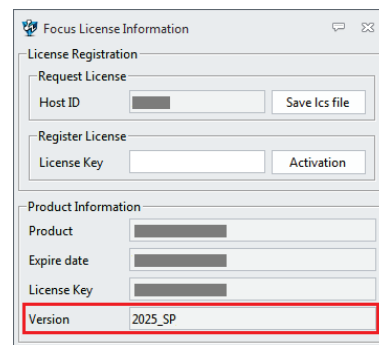
2. Smart Trim to Face (✂️)

Added option to **Keep** or **Remove** the selected part



3. Focus License Info. (🔑)

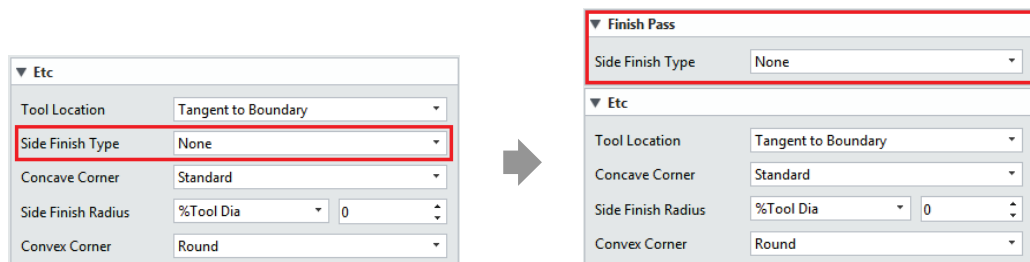
Display the installed version information



CAM Focus

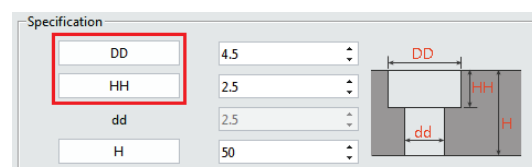
1. Contour (📐)

Moved for easy identification of the **Side Finish Type** option



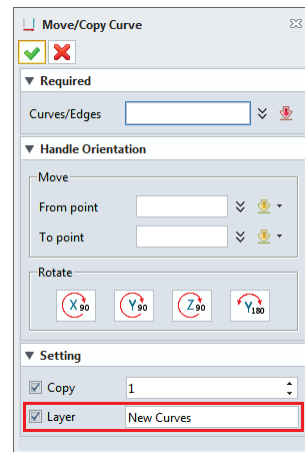
2. Bolt (🔩)

Added icons for measuring counter diameters and depth



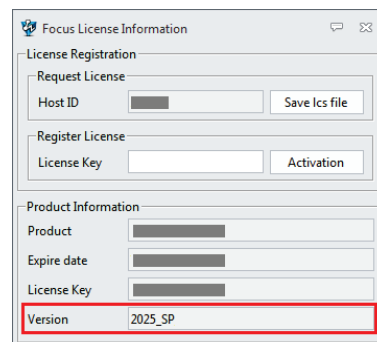
3. Move/Copy Curve ()

Added option to assign copied curves to a specific layer



4. Focus License Info. ()

Display the installed version information



2024.11.29

FOV