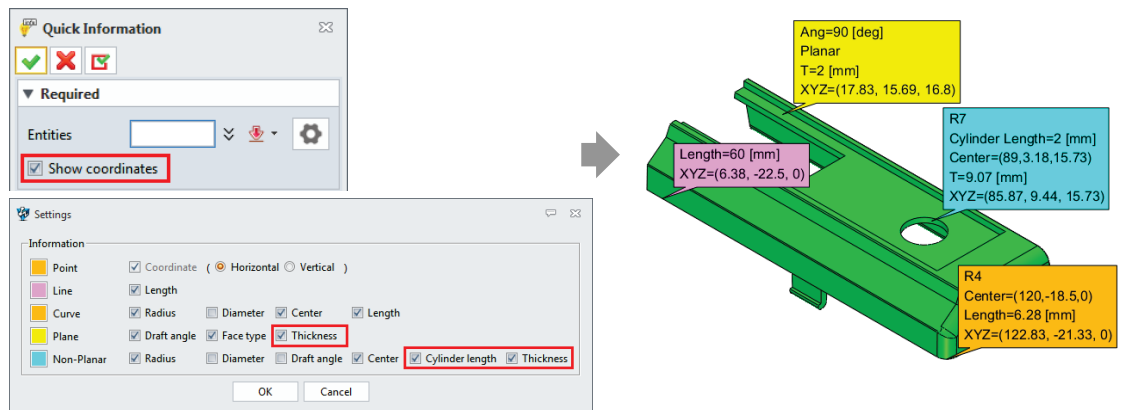


Focus Series 2025 Release Notes

All modules

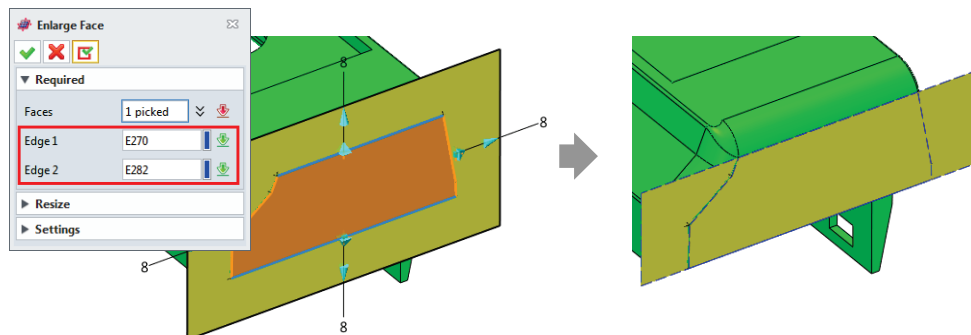
1. Quick Information (📄)

- (1) Added **Show coordinates** option to display the coordinates of the mouse cursor position (XYZ=)
- (2) Settings> Added **Thickness** option to display the thickness of the face (T= [mm])
- (3) Settings> Added **Cylinder length** option to display the length of the cylinder hole (Cylinder Length= [mm])



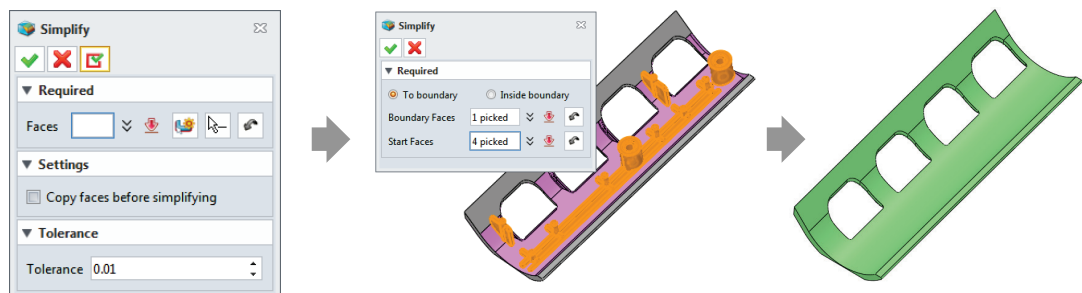
2. Enlarge Face (🔍)

Added **Edge1,2** options to limit extension



3. NEW Simplify (📦)

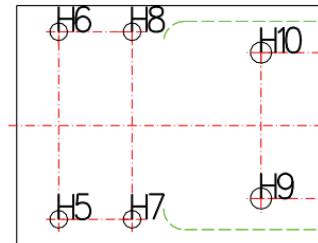
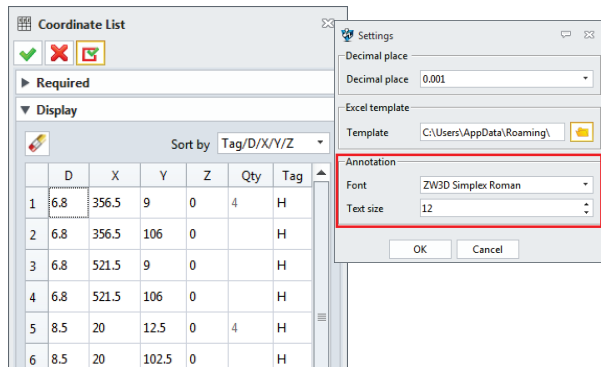
This command easily selects and removes the connected faces.



Basic Focus

1. Coordinate List ()

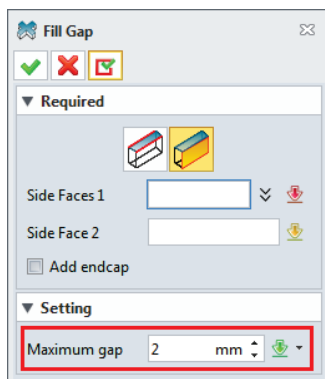
- (1) When exported in a file, the tag texts are created on the screen.
- (2) Settings> Added options to change the size and font of tag texts



Face-Edit Focus

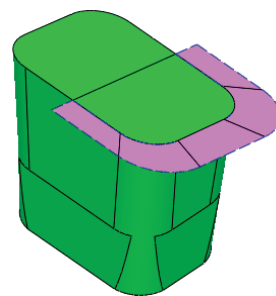
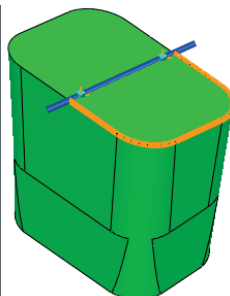
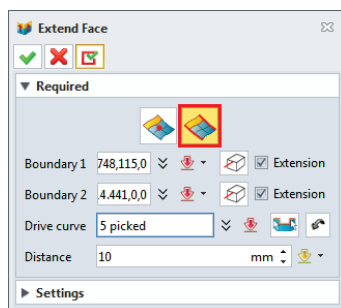
1. Fill Gap ()

Added option to fill only faces within the **maximum gap**



2. Extend Face ()

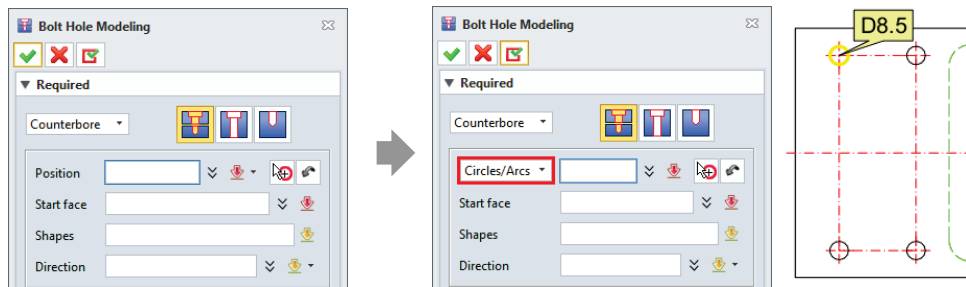
Added the **Select two boundaries** type to create extension faces at the edges between the two boundaries



Modeling Focus

1. Bolt Hole Modeling ()

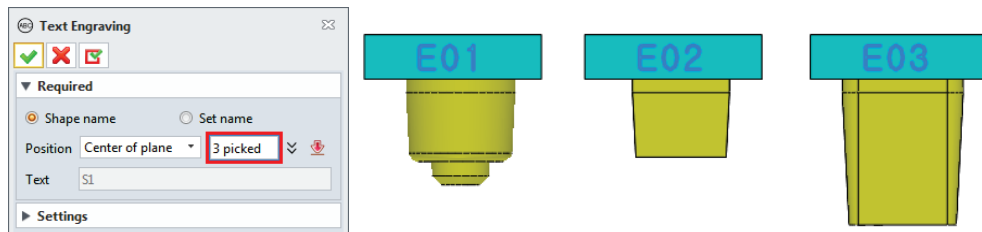
- (1) Added **Circles/Arcs** type in object selection
- (2) Diameter is displayed at the mouse cursor position



Electrode Focus

1. Text Engraving ()

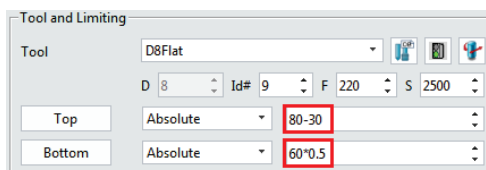
Modified to allow multiple faces to be selected



CAM Focus

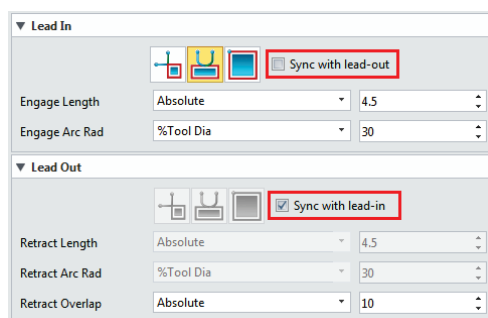
1. Top, Bottom, Depth, Start Height

Support for arithmetic operations in the depth fields



2. Lead In/Out

Added option to copy the settings of the read-in/out of the operation

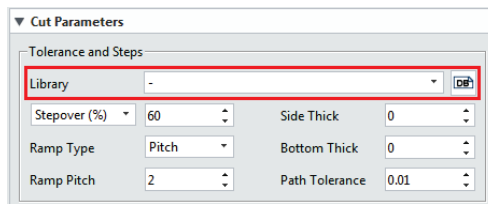


3. Tooltip Image in operation dialog

Tooltip images in the operation dialog are supported on **other tabs** as well as on the **link and lead** tab.

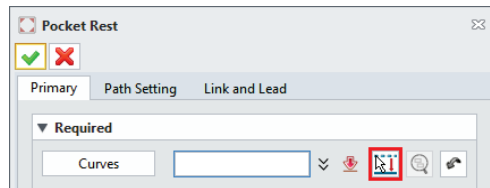
4. Contour ()

Added Library for Ramp



5. Pocket Rest ()

Added the Profile Offset () option

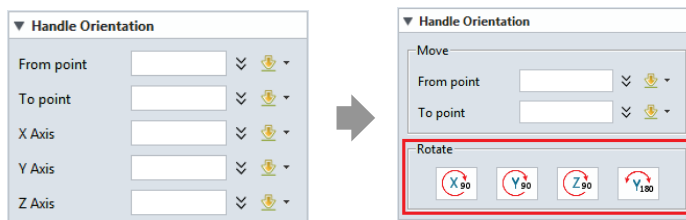


6. Engraving ()

Added the **Start Point** option

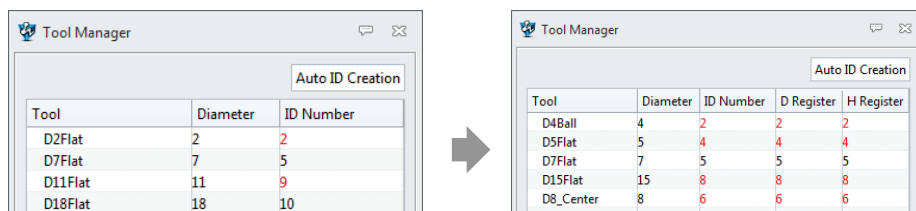
7. Move/Copy Curve ()

Changed the UI for rotation



8. Tool Manager (CAM Focus)

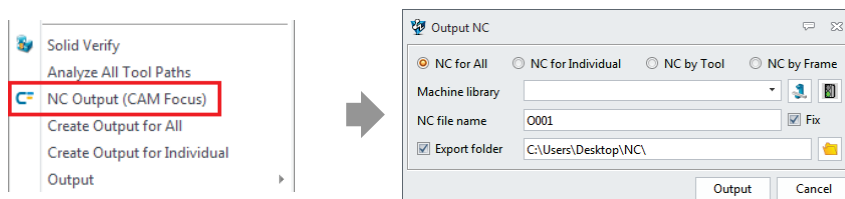
CAM Plan Manager tree> Added **D Register** and **H Register**



9 NEW Output NC (CAM Focus)

(1) CAM Plan Manager tree> Added **NC output** function to set up machine and export folder

(2) **Output NC by Tool (CAM Focus)** and **Output NC by Frame (CAM Focus)** have been integrated into this dialog.



2024.06.21

FOV